



Villages Sheet

Name Village	PIOMBINO
Province	LIVORNO
Tourist information	<p>Piombinoc/o Palazzo Comunale Via Ferruccio 4 tel. +39 0565.225639 ufficioturismopiombino@parchivaldicornia.it</p> <p>Gulf of Baratti Entrance to the Archaeological Park of Baratti and Populonia tel +39 0565.1970455+39 393.8111242 ufficioturismobaratti@parchivaldicornia.it</p> <p>Riotortoc/o Informagiovani Via De Amicis 34 tel. +39 0565.252108 ufficioturismoriotorto@parchivaldicornia.it</p> <p>Website: piombino@costadeglietruschi.eu</p>

TESTED BY: [Handy Superabile Social Promotion Association](#) in summer 2024

Please note The following information refers to the date of verification shown at the bottom of each sheet. **The Association** is not responsible for any significant changes made by the property after the visit.

Summary

Villages Sheet.....	1
Description.....	2
How to reach Piombino	2
Arrival at the village	3
Private/public parking.....	3
Pathway from the car park to the entrance	4
Itinerary description	5
Any accessible bars/restaurants	13
Toilets for guests with reduced mobility	14
Medical practices/healthcare facilities.....	14

Project carried out with the contribution of the





Description

The millenary history of the area, the mild and sunny climate, the unspoiled coast and the privileged position in front of the islands of the Tuscan Archipelago make Piombino one of the most interesting places to discover and explore along the Tuscan coast.

The itinerary includes a visit to the Museum of the Territory where the Etruscan and Roman archaeological finds from the archaeological area of Baratti and Populonia are exhibited; the Leonardo Walls object of study by Leonardo da Vinci, who stayed in the Tyrrhenian town first in 1502; the Church of the Misericordia one of the oldest religious monuments still existing in the city; the Torrione and the Rivellino military architecture of 1212; the Town Hall whose the original nucleus dates back to the thirteenth century, when it was called "Palazzo dei Priori" or "della Comunità"; The Museum of the Sea which exhibits about 800 species organized in systematic order from the 1st to the last room: sponges, cnidarians, molluscs, crustaceans, echinoderms, reptiles, flints, osteichthys, abyssal fish and mammals; Piazza Bovio has a vast natural terrace stretching out over the sea, which embraces three sides and allows you to admire a very wide view of the Piombino canal and finally the Cathedral of Sant'Antimo with its characteristic cloister dating back to 1200, the most important Catholic place of worship in the city.

How to reach Piombino

By car	<p>From the north: A12 towards Rosignano Marittimo. Exit at Rosignano Marittimo and take the SS1 - Via Aurelia towards Grosseto, then exit at "Venturina - Isola d'Elba" and continue towards Piombino Marittima</p> <p>From the south: A1 towards Rome, then follow the signs for A12 Civitavecchia and exit at Civitavecchia to take the SS1 towards Grosseto Livorno. Exit at "Venturina - Isola d'Elba" and continue towards Piombino Marittima</p>
By plane	Pisa Airport
Assistance service for people with disabilities	YES





Embarkation/disembarkation of passengers with reduced mobility	with courtesy chair and ambulift/finger
Tactile paths for the blind and visually impaired	YES
Present a local Accessible toilet with grab handles	YES
By plane	Pisa Airport
By train	The train lines end their run in Campiglia Marittima, where you need to take a bus that takes you to Piombino Marittima in just 20 minutes.
Assistance service for people with disabilities	YES in the stations of Cecina 15 km, San Vincenzo 21 km and Campiglia Marittima 29 km
Blue Hall Reference	Location Florence
Carriage access	with forklift/ramp
There is a toilet room in the station accessible with grab handles	YES
By bus	The bus departure is at the square in front of the Campiglia Marittima train station. The train ticket also includes the bus connection. For timetables consult the website www.at-bus.it

Arrival at the village

Private/public parking

Presence of private parking	NO
Public parking nearby	YES
Type of flooring in the public car park	asphalt
Presence of parking space reserved for people with disabilities	SI no. 2 near the archaeological museum of the territory, no. 1 in front of the Church of the Misericordia

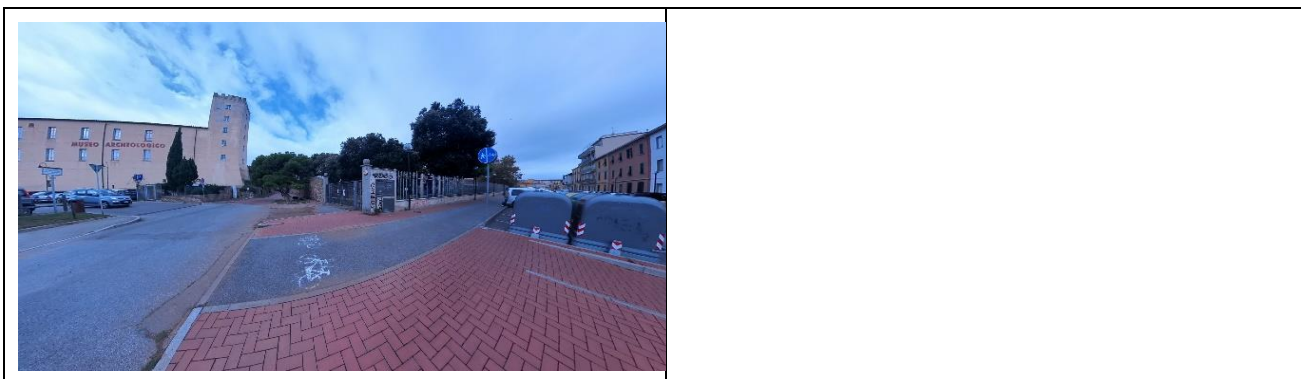




Pathway from the car park to the entrance

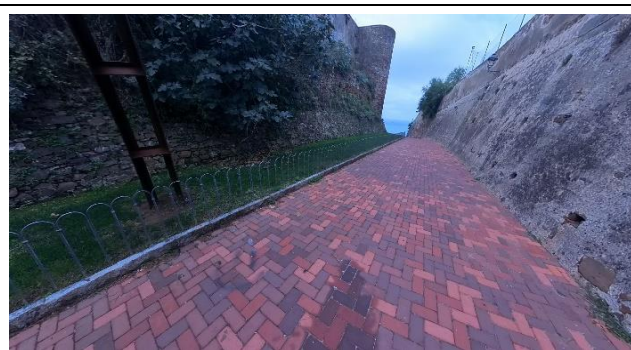
Route from the old town car park to the starting point	Flat
Distance from parking to entrance	About 5 meters
Type of trail surface	asphalt
There are indicators and tactile maps	NO





Itinerary description

Length	About 700 meters
Along the itinerary there are maps and tactile signs for the blind	NO
Along the route there are information panels with QR CODE	YES
Description of the itinerary indicating if there are sections with a significant slope or the presence of steps	Departure of the itinerary at the parking lot adjacent to the Museum of the Territory and Leonardo's Walls. Obstacle-free course





	<p>Leonardo's Walls (for further details see the Leonardian Walls cultural website) From the walls we head towards the archaeological museum of the area, rich in Etruscan Roman finds from the nearby archaeological areas of Baratti and Populonia.</p>
	<p>Museum entrance: via a single ramp. length 175 cm, width 200 cm, slope 8 %, Door width: more than 90 cm with an internal step of 5 cm. For further details see the cultural website of the Museo del Territorio)</p>
	<p>Reception free of obstacles. Bench height greater than 90 cm. Bar to the right of the Reception, with a door width of more than 90 cm. Access to the rooms via a long ramp. 550 cm, 6% slope and lift with W. door 89 cm, width. Booth 140 cm, Booth depth 150 cm, Call button height 118 cm, Highest button height Keypad 133, Embossed/Braille keys</p>





The route continues to the Church of the Misericordia, one of the oldest religious buildings in the city.
Distance from the Museum/Church about 50 meters, slope 6%.
Church entrance: via n. 1 steps variable height from 6 to 14 cm. Internal threshold 7.5 cm



for further details see the Church of Mercy cultural website

Continue along Via Garibaldi. Route without obstacles.









	<p>Via Garibaldi ends on the main street. From here, turn left and continue to the Torrione dating back to 1212 and the Rivellino dating back to 1414, military architecture located in the historic center of the village.</p>
	<p>Entrance width: more than 90 cm. Inside, there are 2 ramps on the right and left both with a length of 125 cm, width 122 cm, slope 11%. For further details see the cultural website of Torrione e Rivellino)</p>





<p>From the Torrione continue along the street of the course in the direction of the Town Hall.</p>	
<p>Common entrance: free of obstacles For further details see the Palazzo Comunale cultural website</p>	
<p>From the town centre, continue along Corso Emanuele until you reach Piazza Bovio about 50 metres with a gradient of 6/7%. In Piazza Bovio immediately on the right we find the Museum of the Sea. For further details see the Museo del Mare cultural website</p>	
<p>Entrance to the Museum of the Sea: 2 double ramps located on the right and left. 1st ramp on the left: length 520 cm, width 150 cm, slope 10%. 2nd ramp length 570 cm, width 200 cm slope 11%. 2nd ramp on the right: length 575 cm, width 150 cm, slope 10.3%, 2nd ramp length 570, width 200 cm slope 9%</p>	

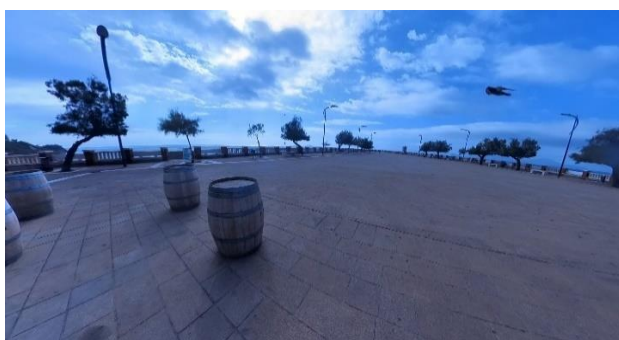




Door width. Greater than 90 cm.
Access to the rooms: by elevator door width 68 cm, cabin width 72 cm, cabin depth 113 cm, call button height 110 cm, highest button height keyboard 140, embossed/braille keys



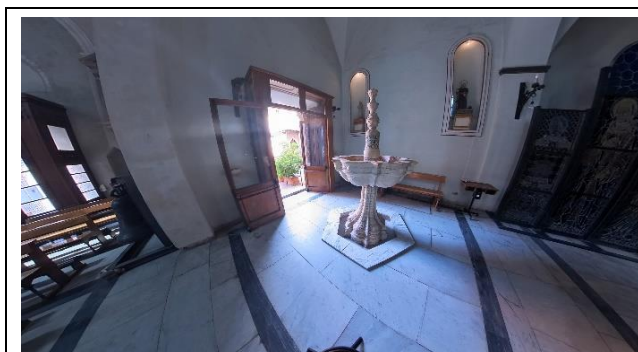
Continuing we find ourselves in Piazza Bovio located on the tip of the promontory, and formerly called Piazzarella. Equipped with a large natural terrace overlooking the sea, it was built in 1920. For further details consult the Piazza Bovo and Fortilizio cultural website.





<p>From the square go back towards the main street up to the intersection with Via XX Settembre.</p>	
<p>Continue along the street for about 10 meters. At the first street on the right, turn until you reach the Duomo.</p>	
<p>The Cathedral of Piombino was built in the thirteenth century as a place of worship dedicated to St. Michael, it was enlarged in 1377 by the will of the Lords of Pisa according to the forms of the Sienese Gothic. Due to the suppression of the church of Sant'Antimo above the canals, the cathedral inherited its name and dedication. For further details see the cultural website of the Cathedral of Sant'Antimo</p>	
<p>Access to the Duomo. via ramp single length 155 cm, width 126 cm, slope 22%, handrails on both sides</p>	





Step of 7.5 cm inside the door



From the outside it is also possible to visit its cloister.

Access to the cloister: via ramp length 464 cm, width 160 cm, slope 11.5 %, handrail left/right/both sides

Immediately after the entrance door small ramp 50 cm long, 140 wide slope 8%




Immediately after the entrance door small ramp 50 cm long, 140 wide slope 8%

For further details consult the cultural website Cloister of Sant'Antimo.





Any accessible bars/restaurants

Type of room and name	Il Garibaldi Innamorato Restaurant
Location	Via Garibaldi n. 5
How to access the premises	Threshold step of about 6 cm. The restaurant has a small Removable ramp
	
Useful width of door/entrance gate	Above 90 cm
Type of door	door
Types of tables	4 legs
Braille menu	NO
Table service for people with disabilities	YES
Eventual notes	The restaurant has an equipped toilet. It has a toilet with grab bars on both sides





Toilets for guests with reduced mobility

Number of accessible toilets for guests with reduced mobility	The accessible toilets are located inside the Museum of the Territory and the Museum of the Sea (see the cultural site of the Museum of the Territory and the cultural site of the Museum of the Sea)
---	---

Medical practices/healthcare facilities

Hospitals near the property	Villamarina Hospital via Forlanini 24 Piombino (LI) Phone +39 0565 67111
Other healthcare facilities	Asl Piombino via V. Veneto 43 telephone +39 0565 67610 Dialysis Center Phone +39 0565 67283 nefrologia.piombino@uslnordovest.toscana.it

TESTED BY: [Handy Superabile Social Promotion Association](#) in 2024

